



***“Skill and Leadership  
Development in Energy Sectors”***  
**13<sup>th</sup> World PetroCoal Congress**  
**15-16 Feb. 2023**

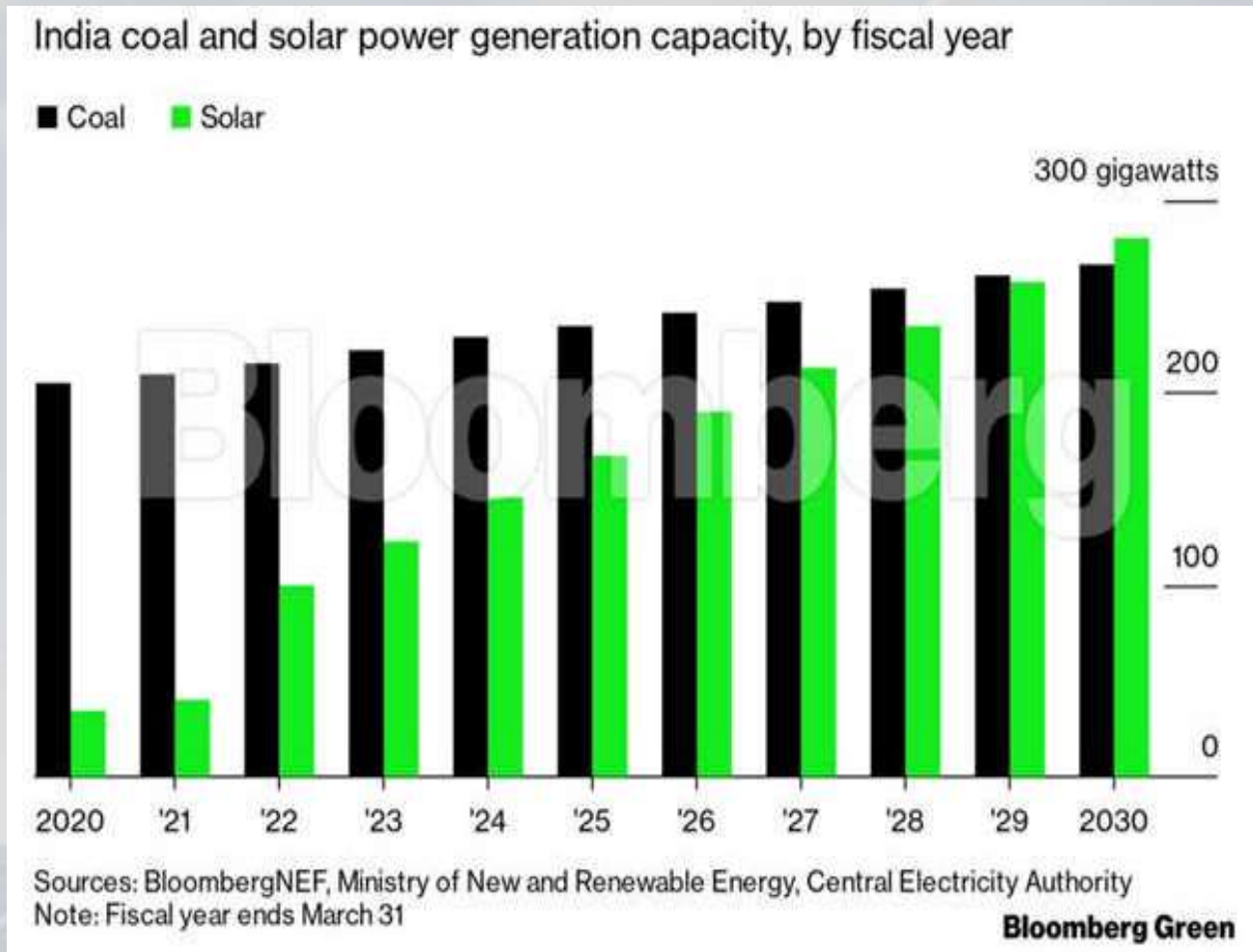
**Dr. Sweta Saurabh**  
**Dean Academics**  
**I Business Institute, Greater NOIDA**

**Motto of G20- “Building consensus for fair and sustainable development”**

The concept of "synergy for Energy" is also closely related to sustainable development, as it emphasizes the importance of working together to achieve sustainable energy outcomes.



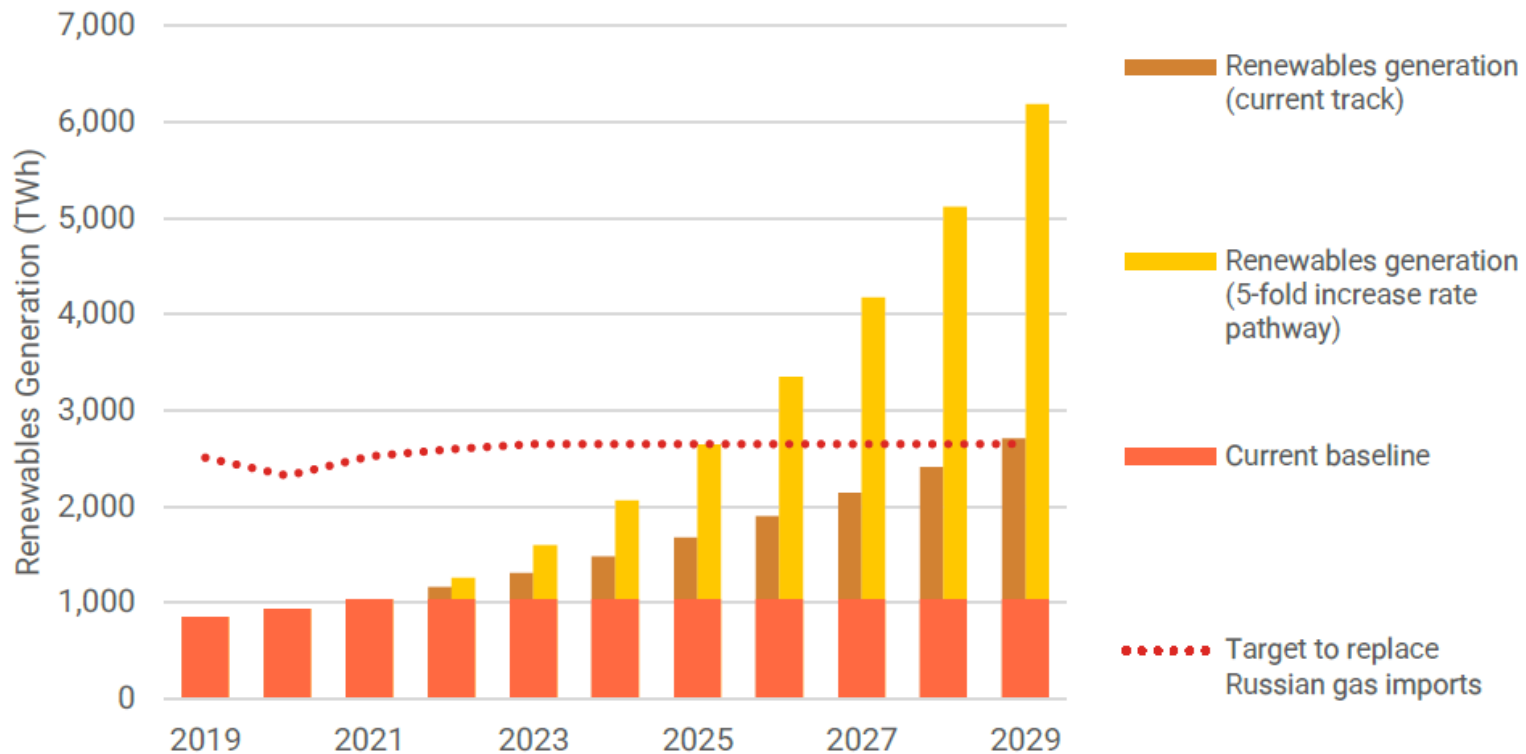
# Progress and Projections



The International Energy Agency in its report in Dec. 2022 has projected that the global capacity for producing renewable energy will soar by some 75% in the next five years.

Renewables will account for over 90% of global electricity expansion over the next five years, overtaking coal to become the largest source of global electricity by early 2025.

# Progress and Projections

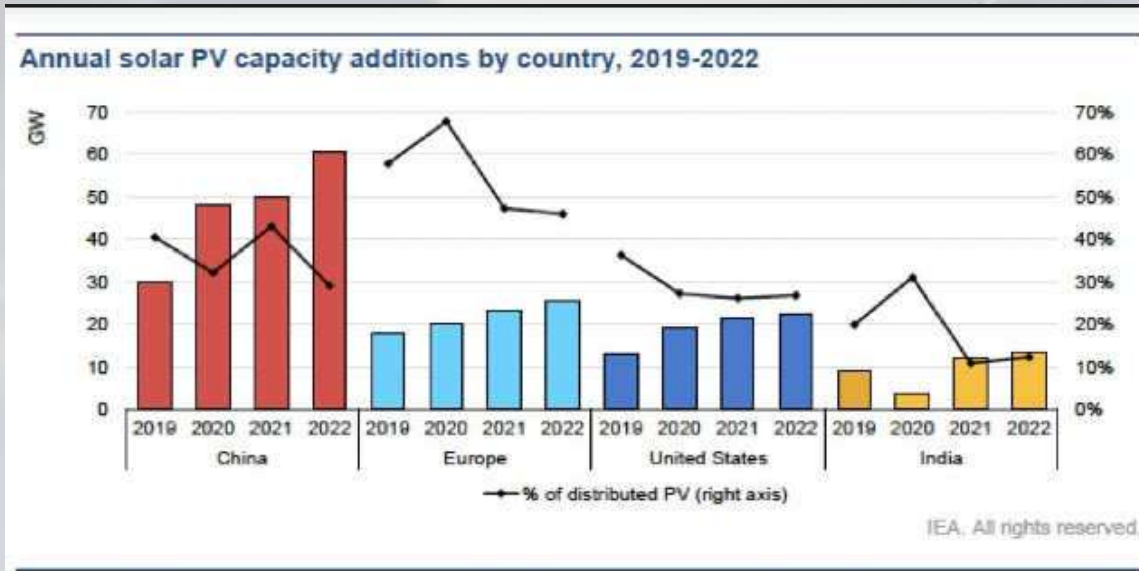


Source: Kaya Research ApS

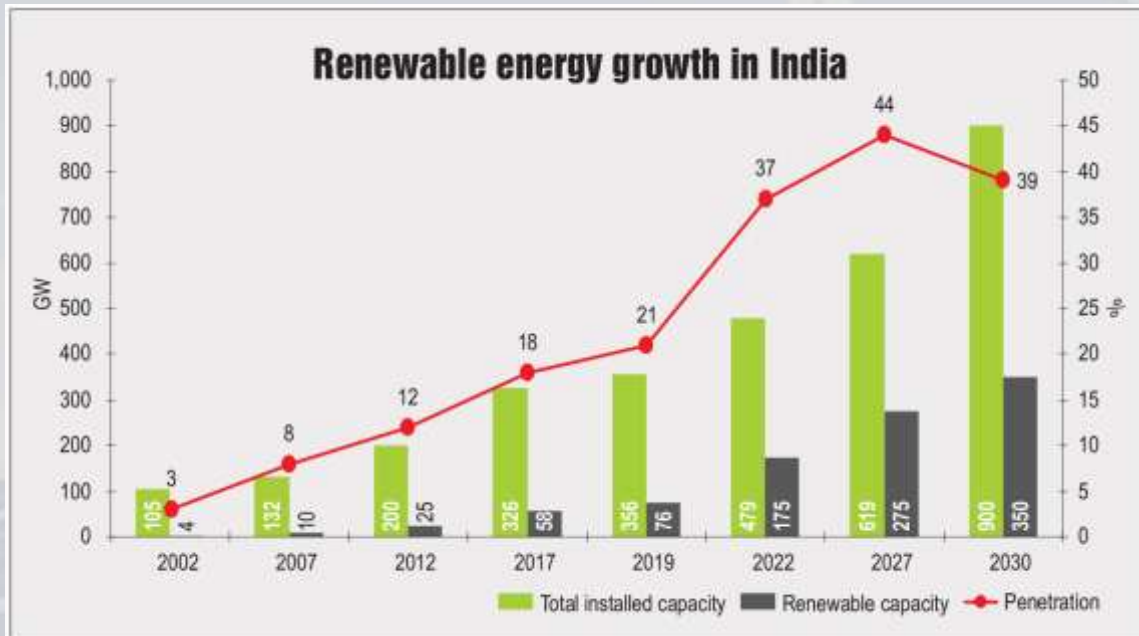
The war in Ukraine has proved to be a decisive moment for renewables in Europe, where governments and businesses are looking to replace Russian gas with alternatives as quickly as possible.



# Progress and Projections



India saw the highest year on year growth in renewable energy additions of 9.83% in 2022.



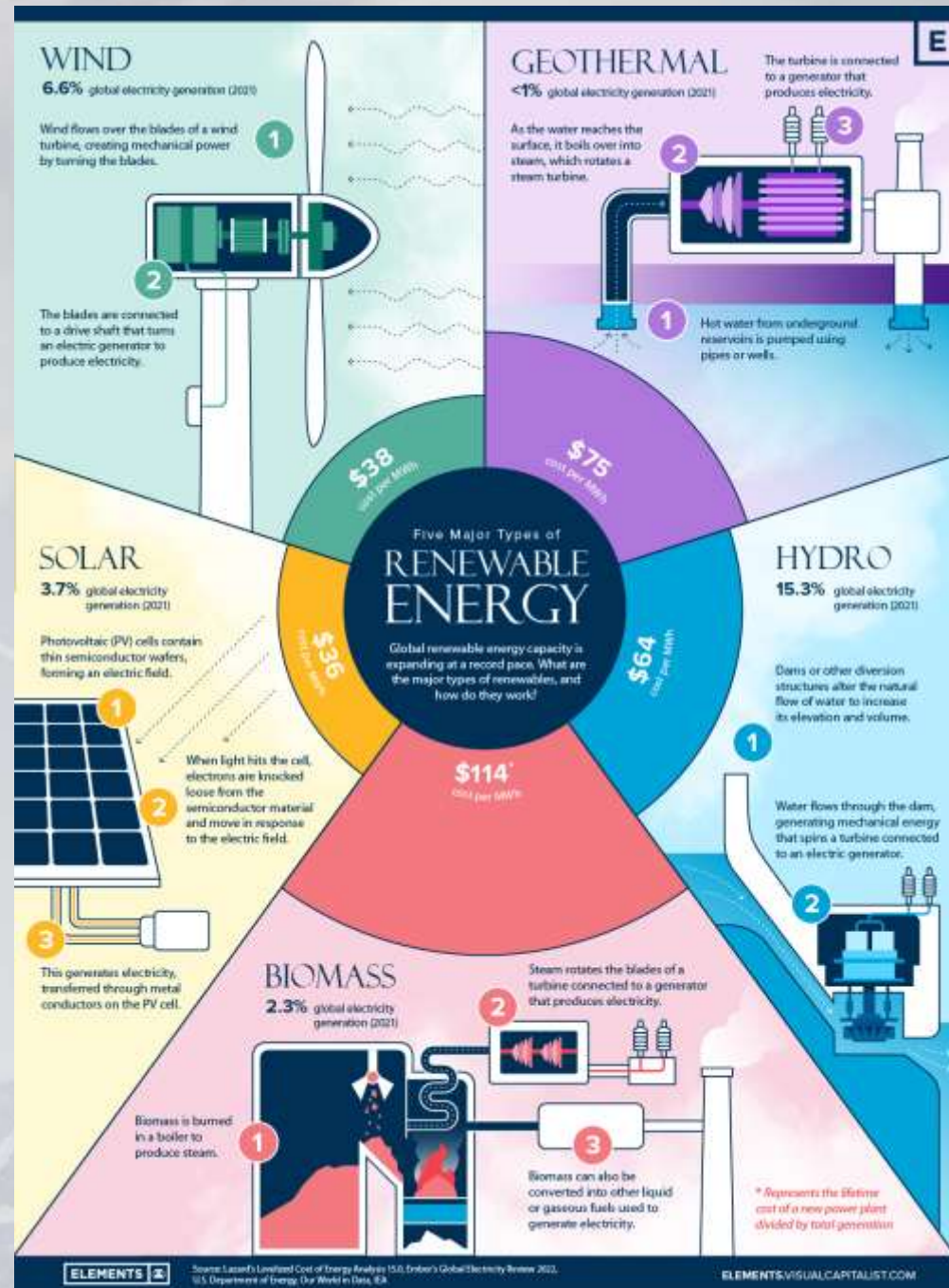
# Progress and Projections

- Renewable energy has a share of 26.53% in the total installed generation capacity in the country.
- Solar power tariff reduced by more than 75% using Plug and Play model.
- The total number of electric cars on the world's roads to about 16.5 million. The IEA projects that the number of electric cars will reach 145 million by 2030.

# Sustainable Energy

The energy derived from renewable resources that are naturally replenished over time and do not have a significant impact on the environment.

Sources like solar, wind, hydro, and geothermal power.



# Challenges





# Ways to Overcome

Collaborative  
innovation

Shared  
Infrastructure

Public-private  
partnerships

Regional  
Cooperation

Community  
Engagement

# Skill and Leadership Development towards Sustainable Energy

Improved understanding of energy-efficient technologies

Building awareness of energy-saving practices

Promoting innovation and creativity

Developing a skilled workforce

Developing future leaders

Promoting collaboration

Driving efficiency

# Support from Business Schools

Curriculum  
development

Industry  
partnerships

Research and  
thought  
leadership

Experiential  
learning

Collaboration  
with other  
schools

**You may reach at:**

**Dr. Sweta Saurabh**

**Dean Academics**

**I Business Institute, Greater NOIDA**

**E-mail: [swetasaurabh@gmail.com/](mailto:swetasaurabh@gmail.com)  
[info@ibusinessinstitute.org](mailto:info@ibusinessinstitute.org)**

**Contact: +91 9811509787**

**LinkedIn: [linkedin.com/in/sweta-saurabh-145ba317](https://www.linkedin.com/in/sweta-saurabh-145ba317)**

